

WYNWOOD GREEN

595 AUSTIN

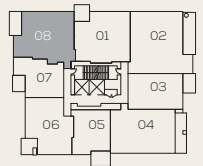
PLAN D1

2 BEDROOM + DEN + 2 BATH

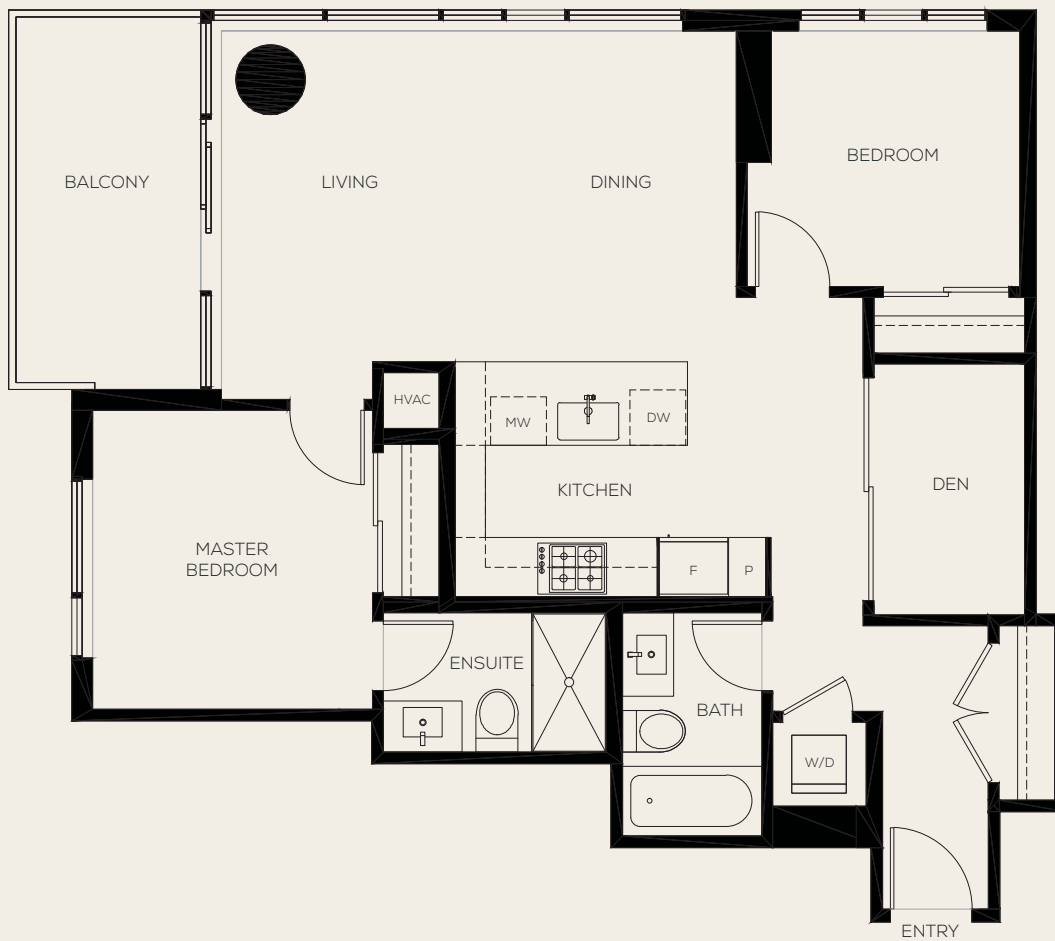
INTERIOR 911 SQ FT

EXTERIOR 95 SQ FT

TOTAL 1,006 SQ FT



LEVELS 3 - 26



The developer (Anthem 585 Austin Developments LP) reserves the right to make changes and modifications to the information contained herein. Floorplans, floorplates and windows are subject to change without notice. Please contact a developer sales representative for details. E. & O.E. *The size and configuration of the balcony or patio represent only a typical balcony or patio in the development. The actual size and configuration of the balcony or patio for any strata lot may vary from that set out in this floor plan. Please contact a developer sales representative for details.