

WYNWOOD GREEN

595 AUSTIN

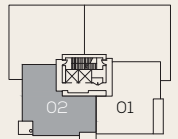
PLAN PH2

3 BEDROOM + 3½ BATH

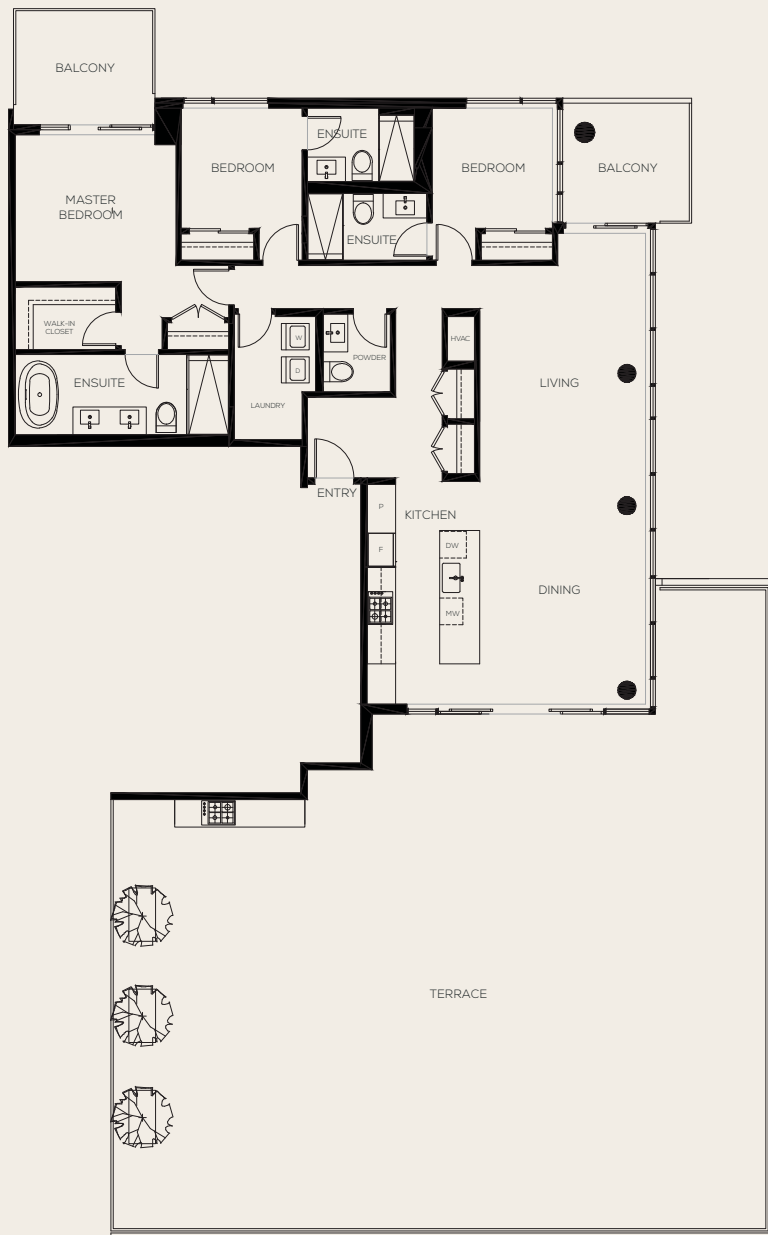
INTERIOR 1,613 SQ FT

EXTERIOR 2,117 SQ FT

TOTAL 3,730 SQ FT



LEVEL 28



The developer (Anthem 585 Austin Developments LP) reserves the right to make changes and modifications to the information contained herein. Floorplans, floorplates and windows are subject to change without notice. Please contact a developer sales representative for details. E. & O.E. *The size and configuration of the balcony or patio represent only a typical balcony or patio in the development. The actual size and configuration of the balcony or patio for any strata lot may vary from that set out in this floor plan. Please contact a developer sales representative for details.