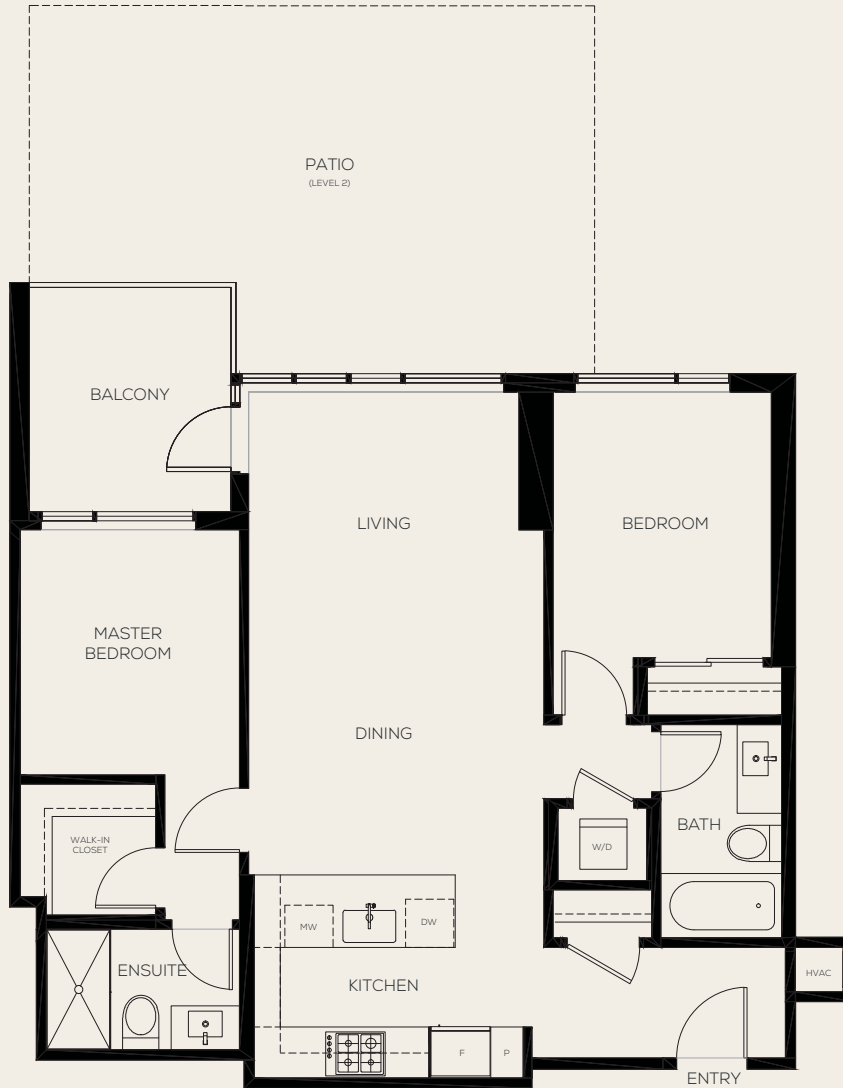
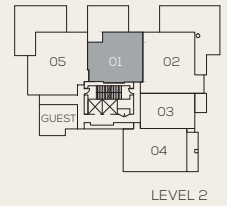
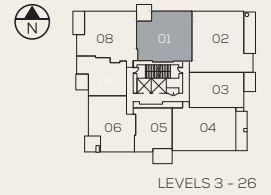


WYNWOOD GREEN

595 AUSTIN PLAN C3

2 BEDROOM + 2 BATH
 INTERIOR 900 SQ FT
 EXTERIOR 86 - 413 SQ FT
 TOTAL 986 - 1313 SQ FT



The developer (Anthem 585 Austin Developments LP) reserves the right to make changes and modifications to the information contained herein. Floorplans, floorplates and windows are subject to change without notice. Please contact a developer sales representative for details. E. & O.E. *The size and configuration of the balcony or patio represent only a typical balcony or patio in the development. The actual size and configuration of the balcony or patio for any strata lot may vary from that set out in this floor plan. Please contact a developer sales representative for details.